

Platinum labware... at your disposal

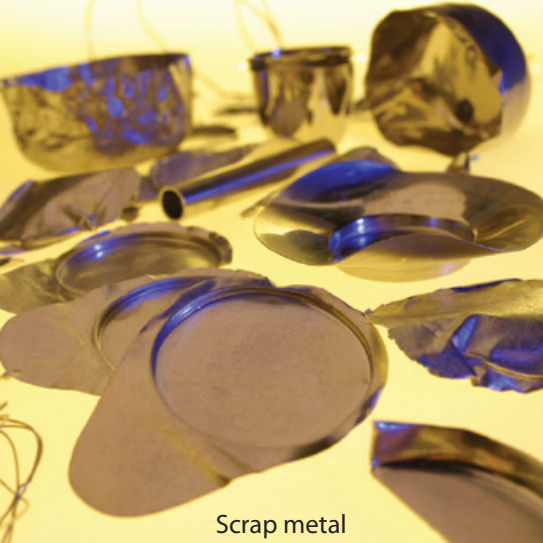


- The new Claisse® Optimix™ crucible can decrease the fusion time when used on a Claisse® M4™ or TheBee™. The three interior indentations at the side produce turbulence that allows a quick and complete homogenization of the melt.
- Available in a variety of sizes and thicknesses, Claisse® molds and crucibles are made of 95% platinum alloyed with 5% gold and are of exceptional quality.
- Claisse® offers any precious metal accessory you may need in your laboratory (dishes, electrodes, tongs, tweezers, etc.).
- Claisse® accepts used molds and crucibles as partial payment for new platinum labware. This scrap policy applies to all other platinum, rhodium, gold and precious metal accessories.
- All molds should be reshaped prior to polishing, so look for our mold reshapers and polishing kit.



The First and Finest in Fusion™





Scrap metal



The First and Finest in Fusion™

Look to Claisse® for:

- Further information on Claisse® products
- Worldwide sales addresses
- Free flux samples
- Free consultation on sample preparation techniques

Please call the fusion experts or visit our website:

350, rue Franquet, Suite 45
 Quebec, QC
 CANADA G1P 4P3
 Tel: 418 656 6453
 Fax: 418 656 1169

www.claisse.com

CRUCIBLES 95% Pt – 5% Au

Cat. Number	Description
P-0130-00	Claisse® Flat Bottom Crucible, 26 mL, 30 g <i>* Available from stock</i>
P-0130-03	Claisse® Optimix™ Crucible, 24 mL, 30 g <i>* Available from stock</i>
P-0330-01	Claisse® Heavy (1 mm thick) Bis!™ Crucible, 25 mL, 30 g <i>* Available from stock</i>
P-0120-00	Claisse® Flat Bottom Crucible, 20 mL, 24 g
P-0125-00	Claisse® Flat Bottom Crucible, 25 mL, 26 g
P-0325-00	Claisse® Bis!™ Crucible, 25 mL, 26 g

All weights are nominal.

MOLDS 95% Pt – 5% Au

Cat. Number	Description
P-0232-01	Claisse® Heavy (1 mm thick) Mold, 32 mm, 36 g <i>* Available from stock</i>
P-0235-01	Claisse® Heavy (1 mm thick) Mold, 35 mm, 48 g <i>* Available from stock</i>
P-0240-01	Claisse® Heavy (1 mm thick) Mold, 40 mm, 48 g <i>* Available from stock</i>
P-0214-50	Claisse® WideRim™ (1 mm thick) Mold, 14 mm, 45 g
P-0230-00	Claisse® Mold, 30 mm, 18 g
P-0230-01	Claisse® Heavy (1 mm thick) Mold, 30 mm, 30 g
P-0230-20	Claisse® Heavy (1 mm thick) Mold, 30 mm, 20° ANGLE, 37 g
P-0230-50	Claisse® WideRim™ (1 mm thick) Mold, 30 mm, 50 g
P-0231-00	Claisse® Mold, 31 mm, 22 g
P-0232-00	Claisse® Mold, 32 mm, 21 g
P-0232-20	Claisse® Heavy (1 mm thick) Mold, 32 mm, 20° ANGLE, 42 g
P-0232-50	Claisse® WideRim™ (1 mm thick) Mold, 32 mm, 50.5 g
P-0235-00	Claisse® Mold, 35 mm, 25 g
P-0235-20	Claisse® Heavy (1 mm thick) Mold, 35 mm, 20° ANGLE, 47 g
P-0235-50	Claisse® WideRim™ (1 mm thick) Mold, 35 mm, 51.4 g
P-0237-00	Claisse® Mold, 37 mm, 28 g
P-0238-00	Claisse® Mold, 38 mm, 29 g
P-0240-00	Claisse® Mold, 40 mm, 34 g
P-0240-20	Claisse® Heavy (1 mm thick) Mold, 40 mm, 20° ANGLE, 54 g
P-0240-50	Claisse® WideRim™ (1 mm thick) Mold, 40 mm, 52.5 g

All weights are nominal.

ACCESSORIES

Cat. Number	Description
P-0430-00	Zirconium Crucible
P-0530-00	Stainless Steel Mold Reshaper
P-0532-10	Matrix 32 mm
P-0535-10	Matrix 35 mm
P-0540-10	Matrix 40 mm
P-0550-00	Bis!™ Crucible Reshaper
P-0600-00	Claisse® Mold Polishing Kit (110V)
P-0600-10	Claisse® Mold Polishing Kit (220V)
P-0600-20	Polishing Recharge 1
P-0600-30	Polishing Recharge 2
V-0120-00	Claisse® VortexMixer™ (110V)
V-0120-50	Claisse® VortexMixer™ (220V)

Claisse offers you a polishing service for your molds to increase their life and to maintain the high quality of your analysis.